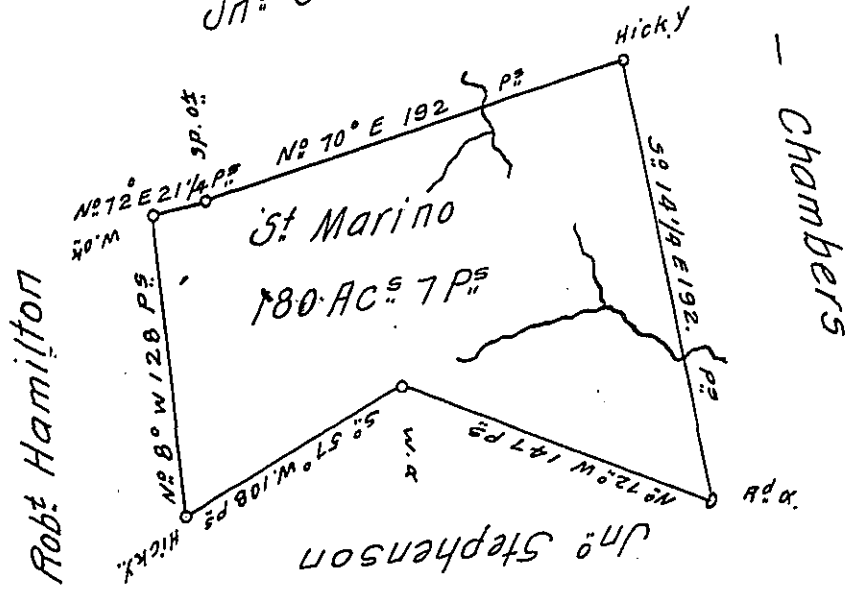


A19-117
Jn^o Christ



A Draught of a Survey called "St. Marino" situate on the Waters of Harman's Creek, in Washington County, cont^g 180 Ac^s 7 P^s strict Measure, executed y^e 25th of Feb^y 1786 in Consequence of a Certifⁱ for 200 Ac^s grant to Gasper Sinclair by the Commiss^{rs} appointed by Virg^a to adjust the Claims to unpatented Lands in the Counties Monong^a Yohg^a & Ohio & duly entered with the County Survc^r & ca.

Jn^o Lukens Esq^r S.G.

Presley Nevill } D.S.
Matt^w Ritchie }

IN TESTIMONY that the above is a copy of the original remaining on file in the Department of Internal Affairs of Pennsylvania, made conformably to an Act of Assembly approved the 16th day of February, 1833, I have hereunto set my Hand and caused the Seal of said Department to be affixed at Harrisburg, this seventh day of April 1908.

Henry Houck
Secretary of Internal Affairs.